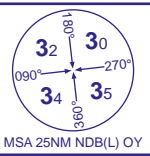


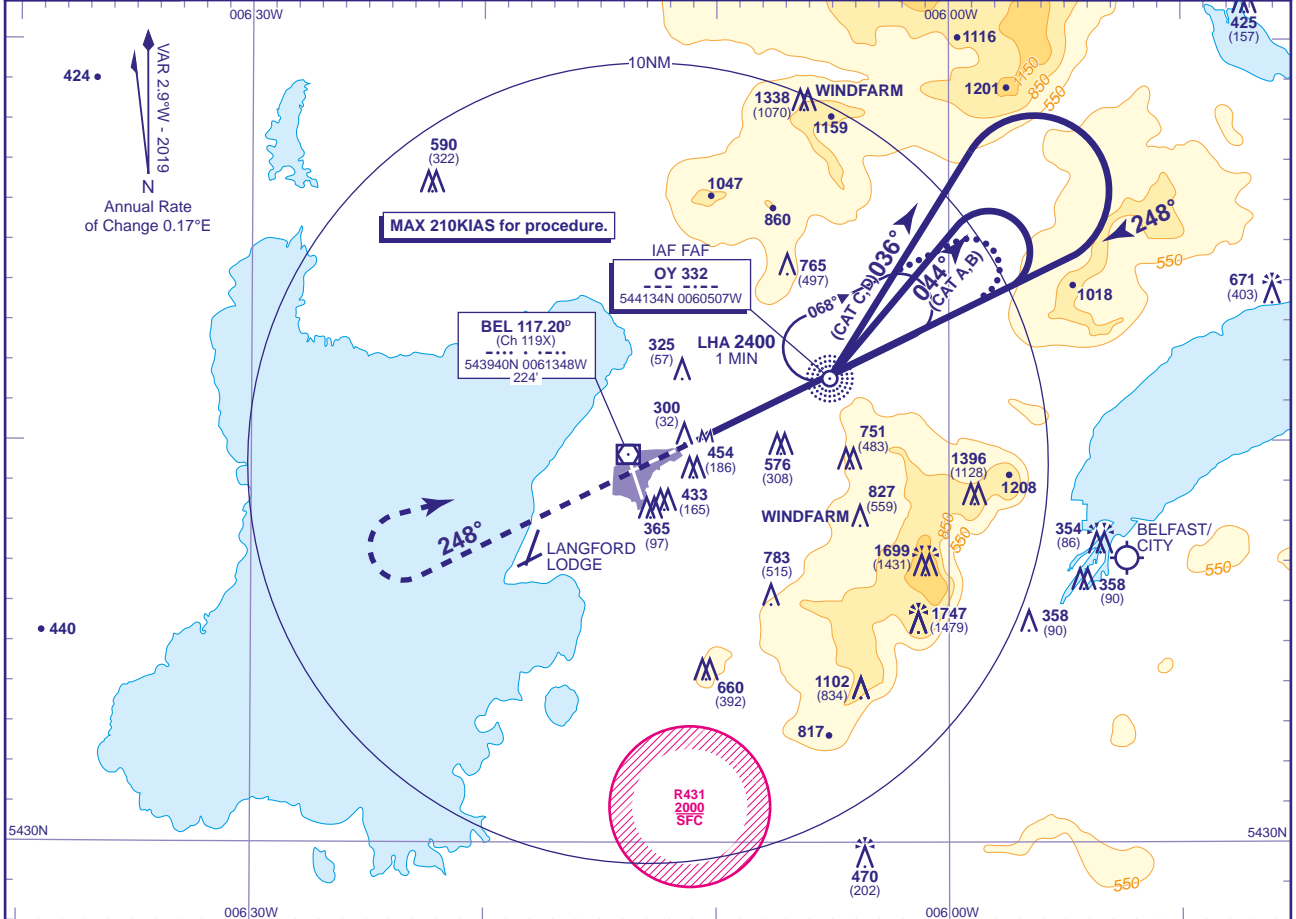
INSTRUMENT APPROACH CHART - ICAO

BELFAST ALDERGROVE - BELFAST ALDERGROVE NDB(L) RWY 25 (ACFT CAT A,B,C,D)

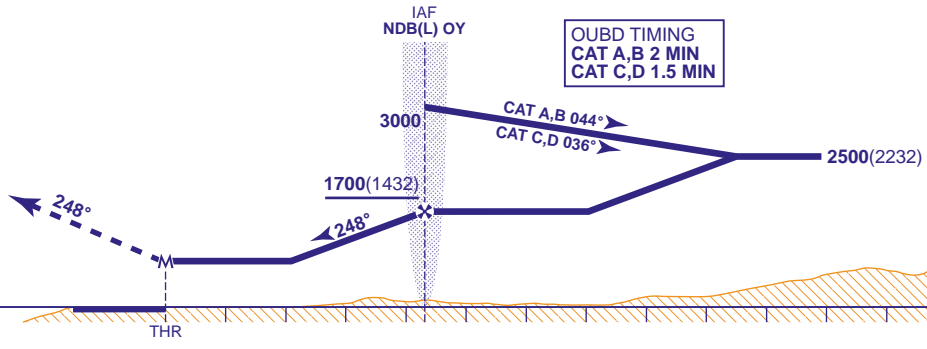


APP	128.500	ALDERGROVE APPROACH	AD ELEVATION	268
TWR	118.300	ALDERGROVE TOWER	THR ELEVATION	268
RAD	120.905	ALDERGROVE DIRECTOR	OBSTACLE ELEVATION	1747 AMSL (1479) (ABOVE THR)
ATIS	126.130	ALDERGROVE INFORMATION	BEARINGS ARE MAGNETIC	

TRANSITION ALTITUDE
6000



MAPt THR RWY 25
Continuous climb to 3000. Initially, on NDB(L) QDR 248 to 1300 then right turn to NDB(L) OY to hold at 3000 or as directed.



OUBD TIMING
CAT A,B 2 MIN
CAT C,D 1.5 MIN

Aircraft Category		A	B	C	D	Rate of descent	G/S KT	160	140	120	100	80
OCA (OCH)	Procedure	760(492)	760(492)	760(492)	760(492)			FT/MIN	850	740	640	530
VM(C)OCA (OCH AAL)	Total Area	750(482)	840(572)	1180(912)	1290(1022)	NDB(L) OY to MAPt	MIN:SEC	1:35	1:49	2:07	2:33	3:11

ALTERNATIVE PROCEDURE EXTENDED HOLDING PATTERN
Overhead NDB(L) OY (IAF) extend outbound leg of holding pattern to 2MIN (CAT A,B); 1.5MIN (CAT C,D), descending to 2500(2232). Turn right onto FAT and continue as for main procedure.

NOTES
1 Nominal final approach gradient 5.2% 320FT/NM.
2 Aircraft will normally be required to hold not lower than 3000 at VOR BEL.

CHANGE (2/19): ATIS/RAD FREQUENCIES.